



GILES BROOK SCHOOL

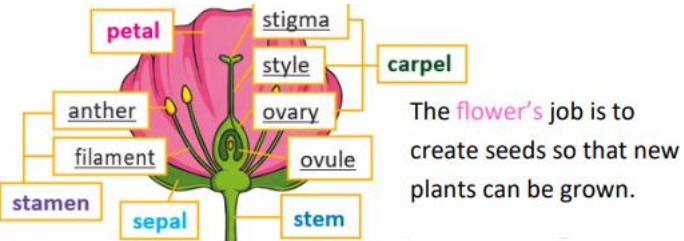
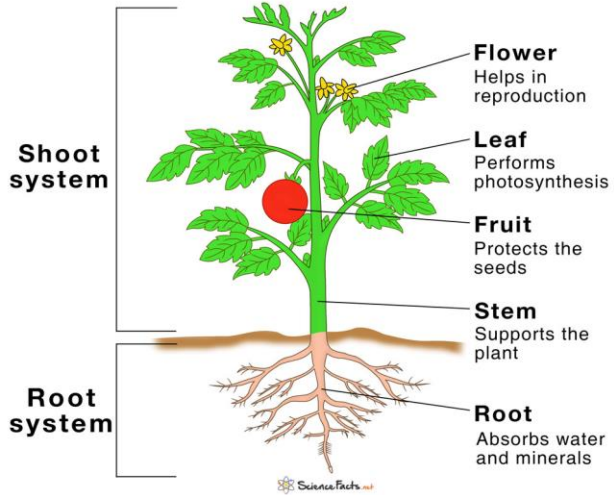
Knowledge Organiser

Science:

I already know:

- The names of some common and wild plants
- The names of parts of a plant
- Some information about what plants need to stay healthy

Parts of a Plant



Key People

Carl Linnaeus-
Botanist

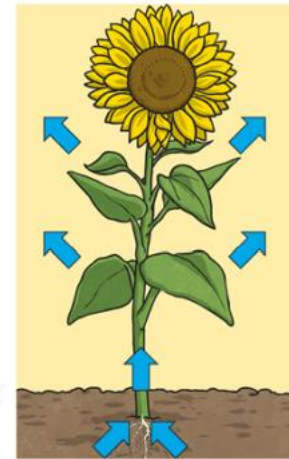


Beatrix Potter-
Botanist and
Author



How water moves through a plant.

- 1 The **roots** absorb water from the soil.
- 2 The **stem** transports water to the **leaves**.
- 3 Water **evaporates** from the **leaves**.
- 4 This **evaporation** causes more water to be sucked up the **stem**.



The water is sucked up the **stem** like water being sucked up through a straw.



Key Vocabulary

Transportation	The way a plant moves water and nutrients
Nutrients	Essential chemical elements for growth and development e.g. Nitrogen
Seed formation	The way in which a seed forms
Seed dispersal	How seeds are moved away from the parent plant to a new location
Stamen	Part of a flower made up of a filament and anther
Filament and anther	Parts of a flower - the filament hold up the anther, the anther produces pollen
Pollen	A yellow dust made by flowers, needed in reproduction
Pollination	The process of moving pollen from one flower to another flower
Stigma	Part of a flower - the stigma is sticky and pollen sticks to it
Ovary	Pollen moves to the ovary from the stigma. The ovary produces an ovule which turns into the fruit and seeds.

Useful web links:

<https://superbrainybeans.com/science/plants-animals/year-3-4/>

<https://www.theschoolrun.com/learning-about-plants-primary-school>