



GILES BROOK SCHOOL

Art Knowledge Organiser - Faces & Expression; Sculpture

Unit Overview:

This Year 6 Art unit **explores faces** and **expression** through drawing, sculpture and photography; encouraging **technical skill** and **artistic expression**.

The Children study artists such as **Franz Xaver Messerschmidt**, **Frida Kahlo** and **Edvard Munch** to understand how **emotion** and **identity** are conveyed.

They develop drawing techniques including **cross hatching** and **pointillism**, while learning about **proportion** in **facial features**. Experimenting with colour, composition and light, they design and create sculptures using clay and wire **armatures**, building form and movement by adding detail.

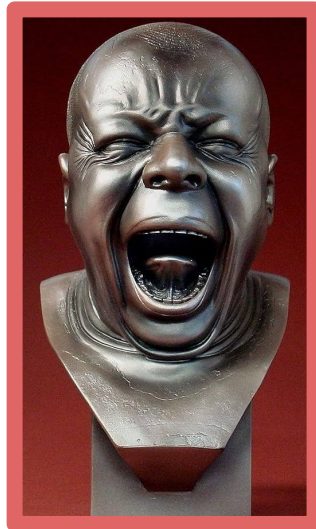
Key Skills:

- Develop drawing skills using shading techniques, proportion, and observation to create expressive realistic portraits
- Create sculptures and photographs using materials and composition to show form, movement, and emotion effectively

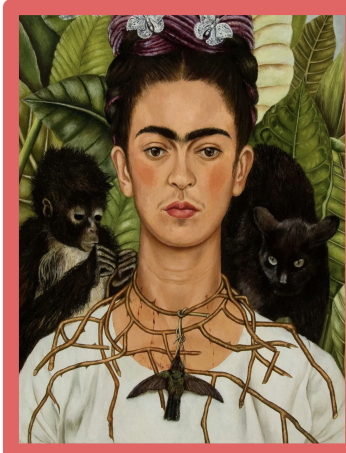
I already know:

- How to use objects around us to form sculptures
- How to build an armature using shapes from original forms applying modroc in modelling
- How to edit existing photography as a base for fabric sculpting

Franz Xaver Messerschmidt



Frida Kahlo



Edvard Munch



Key Artists:

- Frida Kahlo (Mexican)
- Edvard Munch (Norwegian)
- Augusta Savage (African American)

Key Vocabulary

Franz Xaver Messerschmidt	German sculptor famous for making detailed, sculptures with exaggerated facial expressions and strong emotions
Bust	A sculpture showing a person's head, shoulders, and upper chest
Pointillism	A technique using tiny dots of colour to create an image
Slip and score	Wet clay used as glue and scratching clay to join pieces
Relief	Raised areas that stand out from the surface
Contouring	Shaping to show form, curves and depth

